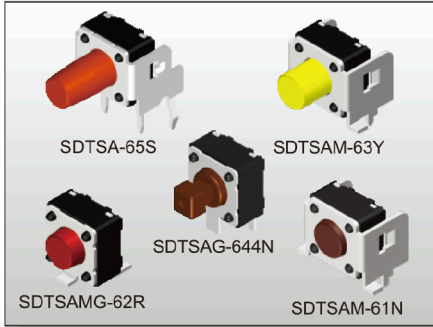


TACT SWITCH SDTSA-6 SERIES

6x6 Right Angle
& Ground Terminal Type



2018



FEATURES

- ※ Variety of actuator lengths
- ※ Optional ground pin
- ※ Cap options

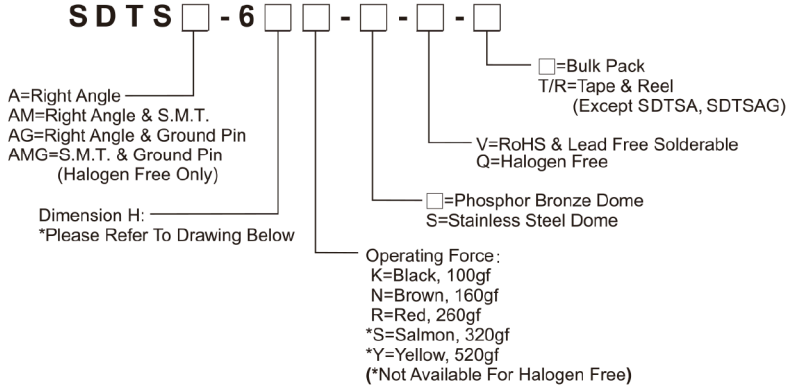
APPLICATION

- ※ Audio, OA equipment
- ※ Instrumentation
- ※ Setup box

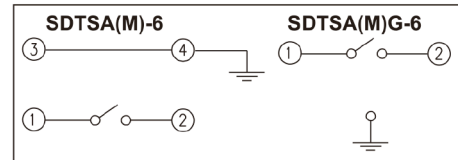
SPECIFICATION

Contact Rating	50mA, 12V DC
Contact Resistance	100mΩ max.
Insulation Resistance	100MΩ min. 500V DC
Dielectric Strength	250V AC/1 minute
Operating Force	100±50gf, Black(K) 160±50gf, Brown(N) 260±50gf, Red(R) 320±80gf, Salmon(S) 520±130gf, Yellow(Y)
Travel	0.25mm
Operating Life	Phosphor Bronze Dome 50,000 cycles for 520/320gf 100,000 cycles for 260gf 200,000 cycles for 160/100gf Stainless Steel Dome 300,000 cycles for 520/320gf 500,000 cycles for 260gf 1,000,000 cycles for 160/100gf
Operating Temp.	-25°C ~ +70°C
Storage Temp.	-30°C ~ +80°C

HOW TO ORDER



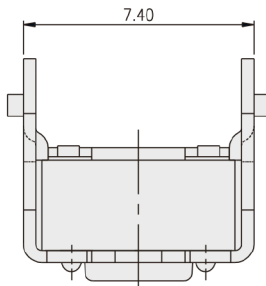
CIRCUIT



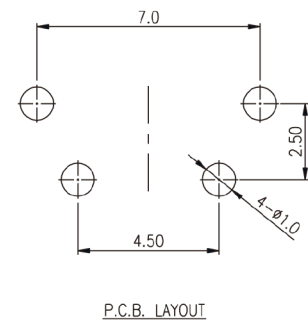
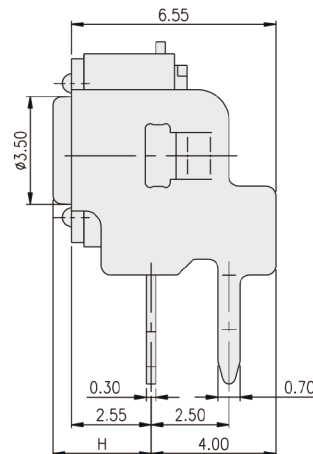
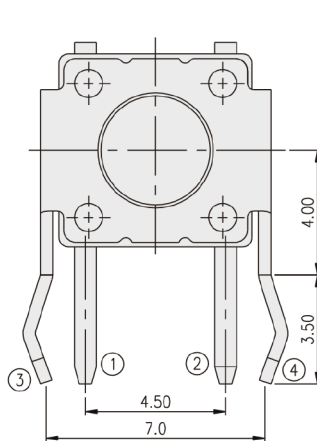
PACKAGE

- <Bag>
SDTSA(G)-6: 500 pcs
- <Tape & Reel>
SDTSA-6: 500 pcs
SDTSAMG-61, 62: 500 pcs
SDTSAMG-63, 64, 65: 380 pcs

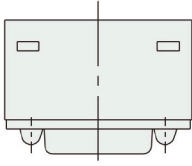
SDTSA-6



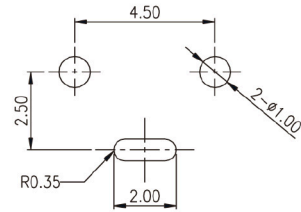
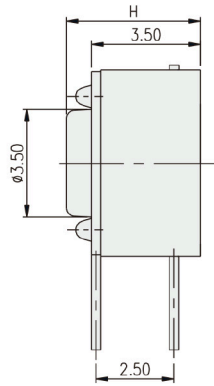
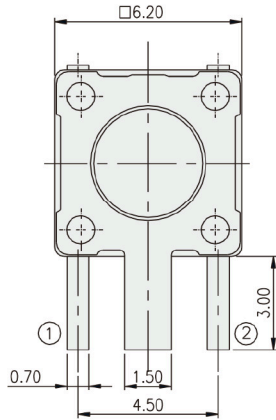
PART NO.	H
SDTSA-61	3.15
SDTSA-62	3.85
SDTSA-63	5.85
SDTSA-644	6.15(SQ.2.40)
SDTSA-648	6.15(SQ.2.80)
SDTSA-65	8.35
SDTSA-66	11.85



SDTSAG-6



PART NO.	H
SDTSAG-61	4.30
SDTSAG-62	5.00
SDTSAG-63	7.00
SDTSAG-644	7.30(SQ.2.40)
SDTSAG-648	7.30(SQ.2.80)
SDTSAG-65	9.50
SDTSAG-66	13.00

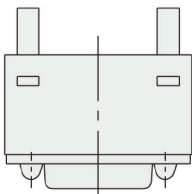


P.C.B. LAYOUT

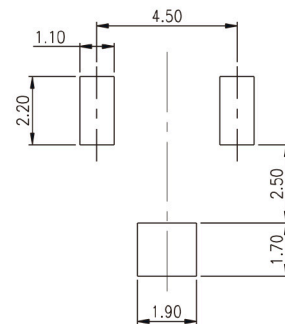
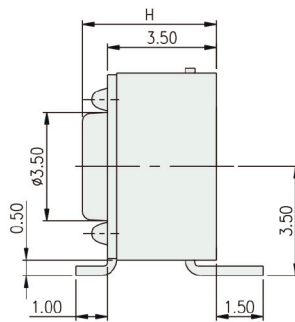
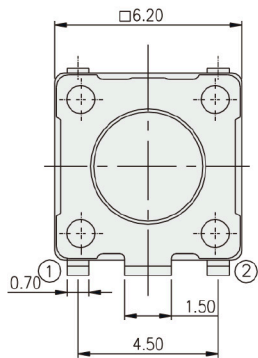


TACT SWITCH

SDTSAMG-6

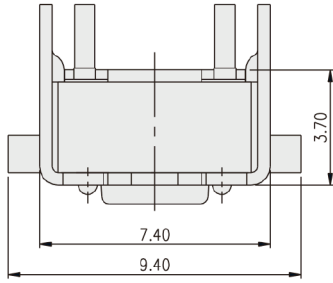


PART NO.	H
SDTSAMG-61	4.30
SDTSAMG-62	5.00
SDTSAMG-63	7.00
SDTSAMG-644	7.30(SQ.2.40)
SDTSAMG-648	7.30(SQ.2.80)
SDTSAMG-65	9.50
SDTSAMG-66	13.00



P.C.B. LAYOUT

SDTSAM-6



PART NO.	H
SDTSAM-61	3.60
SDTSAM-62	4.30
SDTSAM-63	6.30
SDTSAM-644	7.30(SQ.2.40)
SDTSAM-648	7.30(SQ.2.80)
SDTSAM-65	8.80

TACT SWITCH

