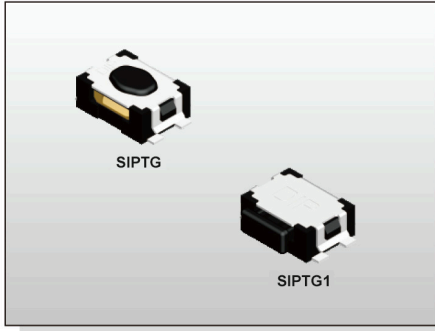


TACT SWITCH
SIPT SERIES

2.8x3.8
Side Push / Vertical Push Type



2018



FEATURES

- ※ Compact-sized 2.8x3.8mm
- ※ Vertical or side actuation
- ※ Wide stem

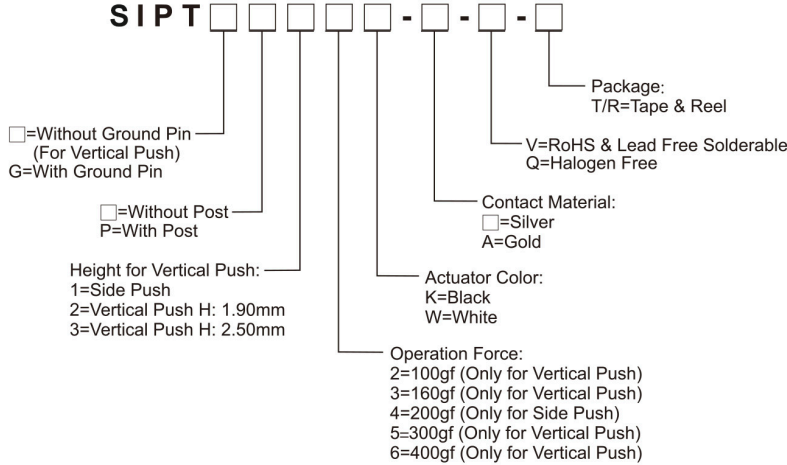
APPLICATION

- ※ Automotive
- ※ Portable electronic device
- ※ Control panel

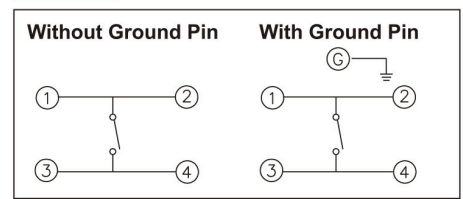
SPECIFICATION

Contact Rating	50mA, 12V DC
Contact Resistance	100mΩ max.
Insulation Resistance	100MΩ min. 500V DC
Dielectric Strength	100V AC/1 minute
Operating Force	100±50gf, 160±50gf (Vertical Push) 200±65gf (Side Push) 300±80gf, 400±80gf (Vertical Push)
Travel	0.13mm (Vertical Push) 0.20mm (Side Push)
Operating Life	50,000 cycles for 300/400gf 100,000 cycles for 100/160/200gf
Operating Temp.	-20°C ~ +70°C
Storage Temp.	-30°C ~ +80°C

HOW TO ORDER



CIRCUIT



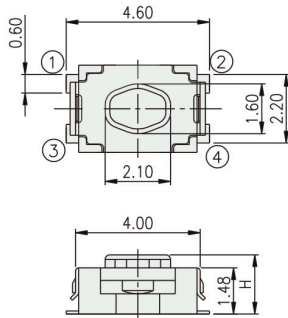
PACKAGE

<Tape & Reel>

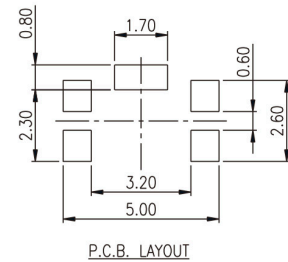
- SIPTG1: 3000 pcs
- SIPTG1: 3500 pcs
- SIPTG2: 7000 pcs
- SIPTG3: 6000 pcs

TACT SWITCH

SIPTG



PART NO.	H
SIPTG2	1.90
SIPTG3	2.50



SIPTG1

