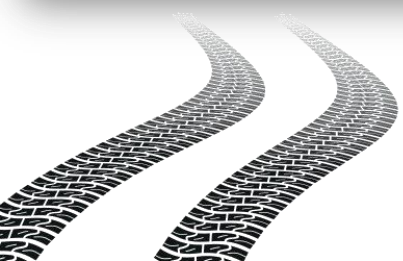


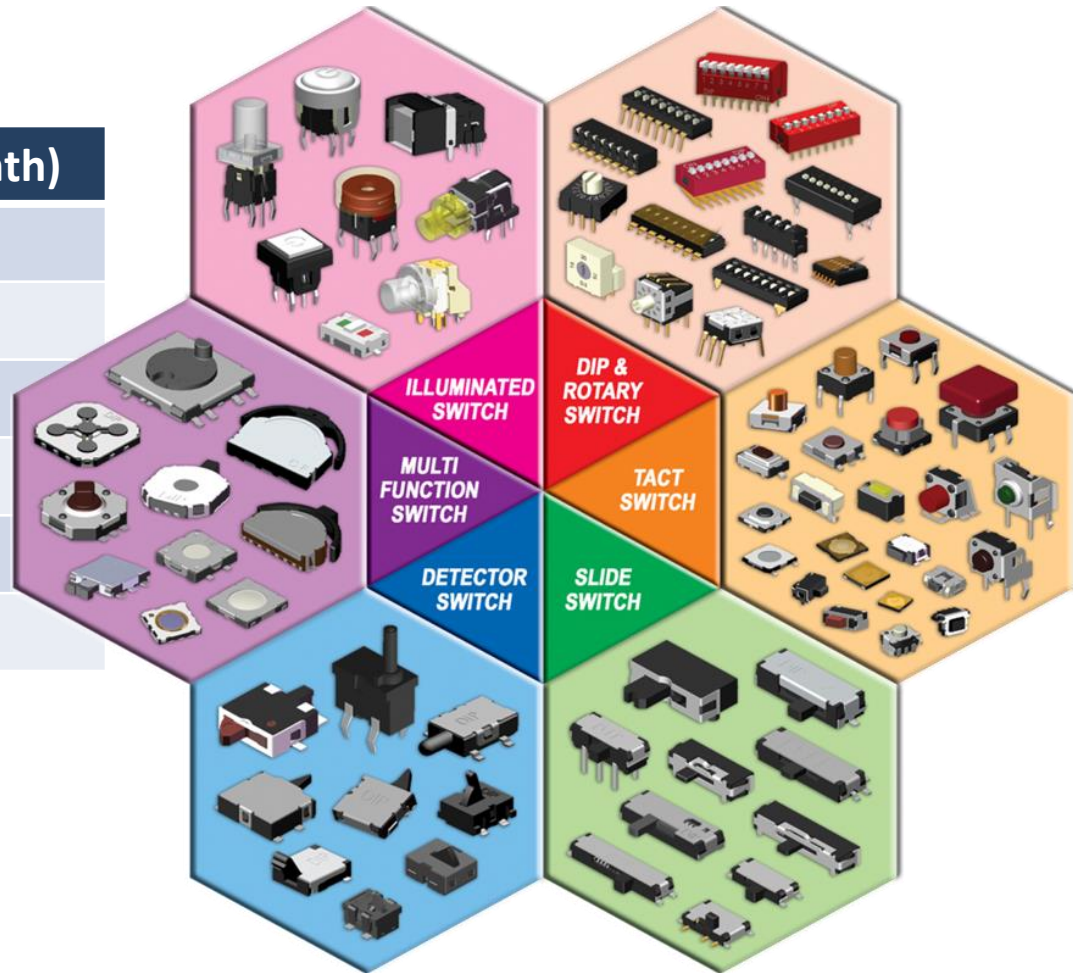
A large, abstract blue background with a central circular light effect and geometric patterns of overlapping lines and shapes, creating a sense of depth and motion.

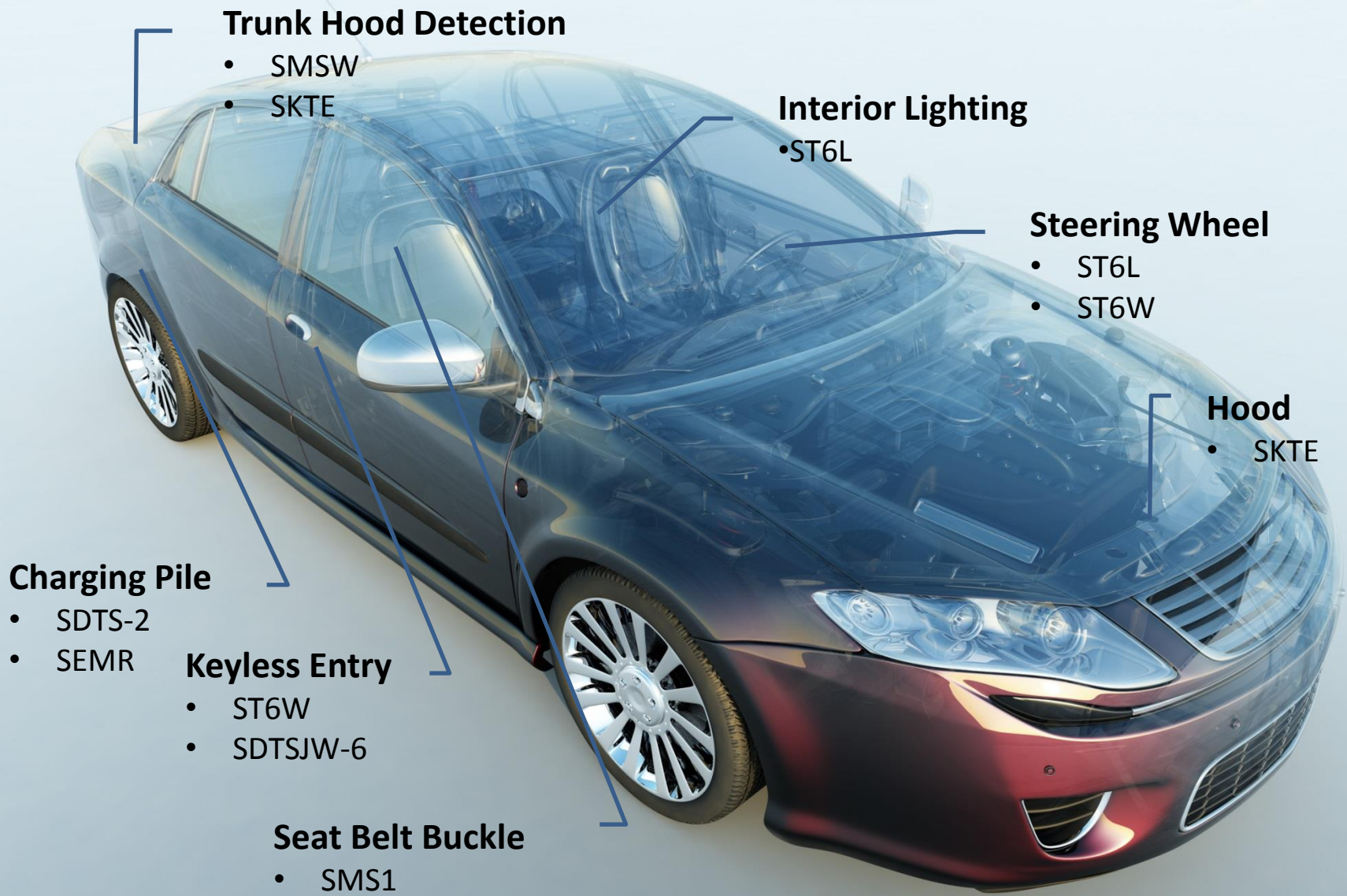
Automotive Switch Solutions



Product Overview

Type	Capacity (Per Month)
DIP	16 million
Tact	113 million
Slide	9.5 million
Detector	8.5 million
Multi Function	2.5 million
Illuminated	1 million





Trunk Hood Detection

- SMSW
- SKTE

Interior Lighting

- ST6L

Steering Wheel

- ST6L
- ST6W

Hood

- SKTE

Charging Pile

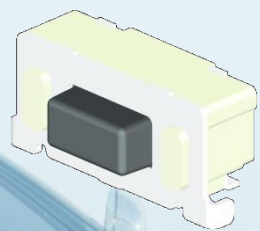
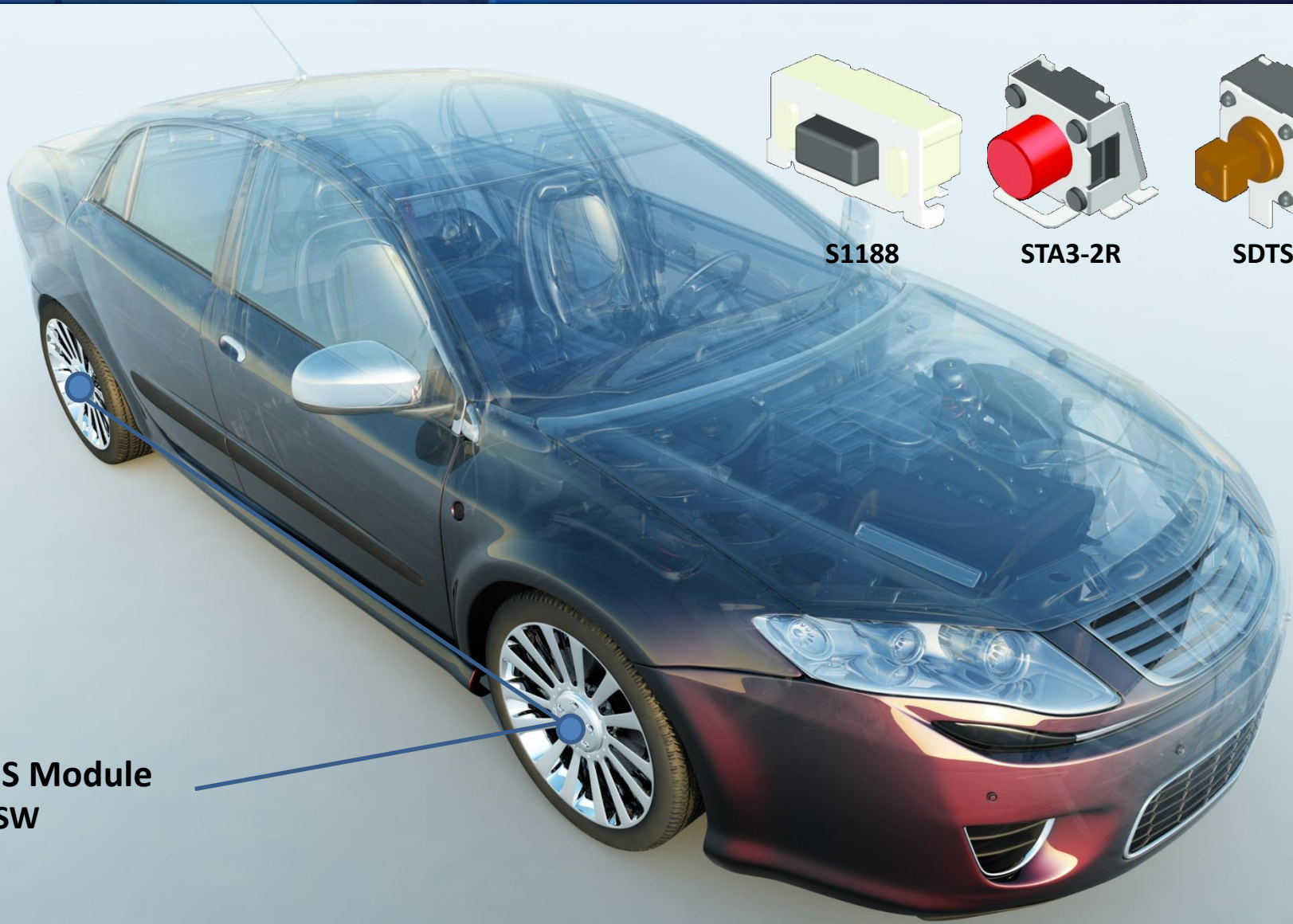
- SDTS-2
- SEMR

Keyless Entry

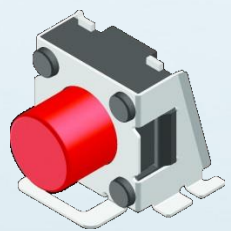
- ST6W
- SDTSJW-6

Seat Belt Buckle

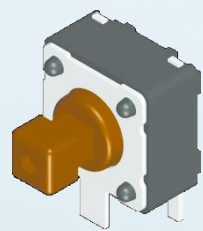
- SMS1



S1188



STA3-2R

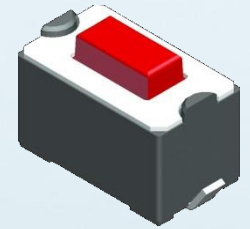


SDTSAG

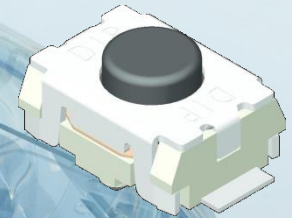
**TPMS Module
Tact SW**



S1188



SDTSM-3

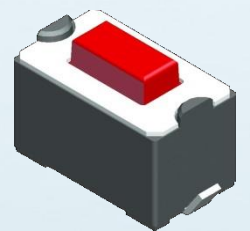


SMPTCFGP

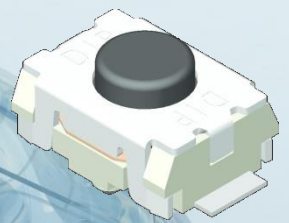
Keyless Entry Tact Switches



S1188

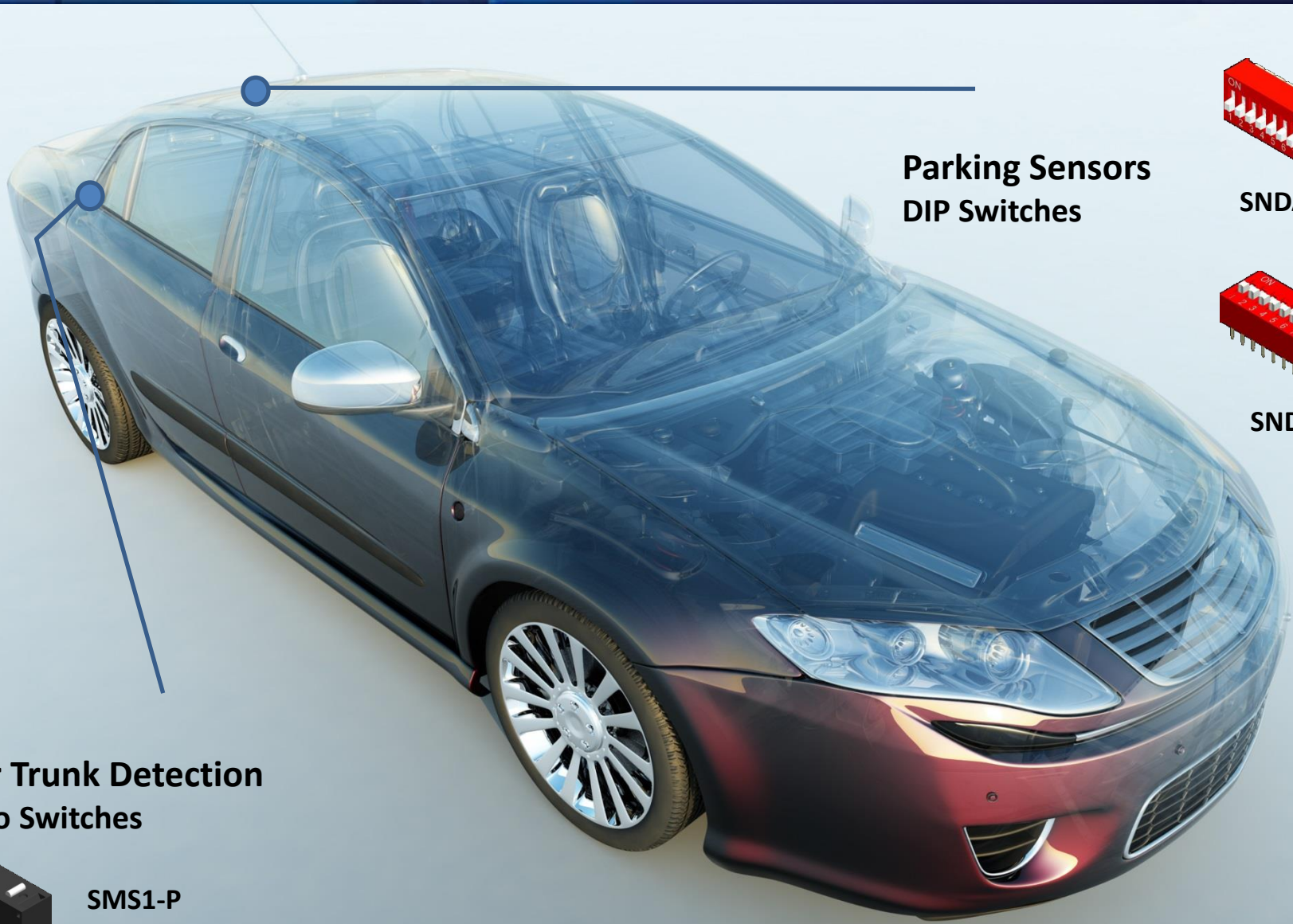


SDTSM-3

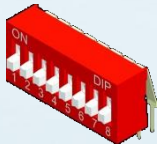


SMPTCFGP

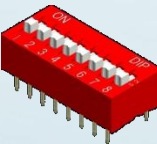
**Security Alarm
Tact Switches**



**Parking Sensors
DIP Switches**



SNDA

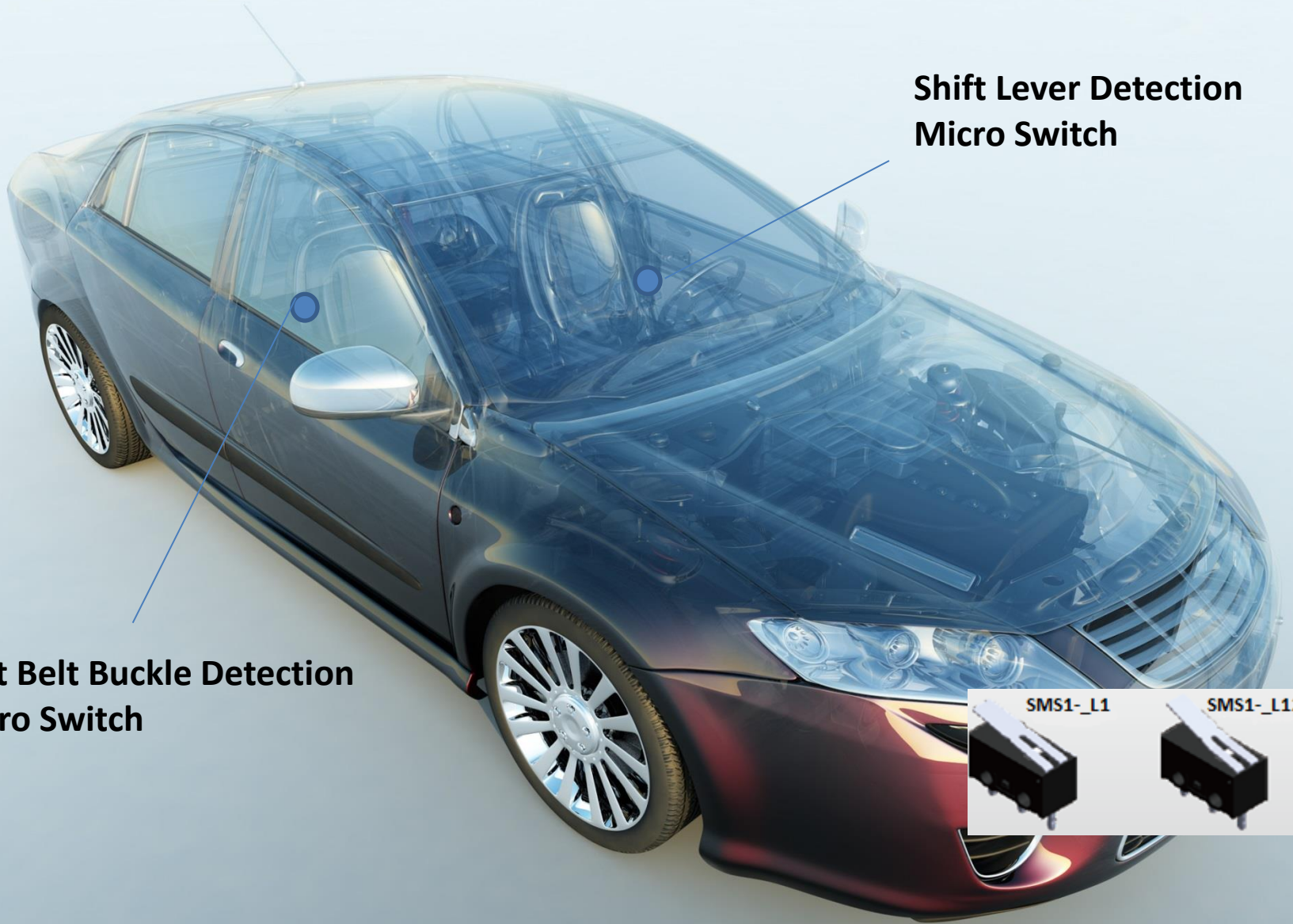


SNDS

**Rear Trunk Detection
Micro Switches**



SMS1-P



**Shift Lever Detection
Micro Switch**

**Seat Belt Buckle Detection
Micro Switch**



Heads Up Display

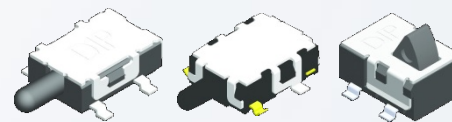


SDTS

STU

STAC

Electronic Toll Detector

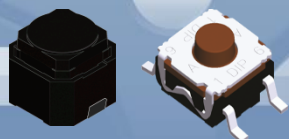


STAC

STJE

SHTE

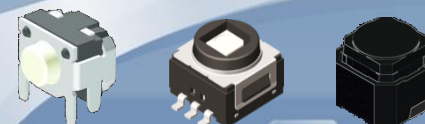
Steering Wheel Controls



ST6L

ST6

Infotainment



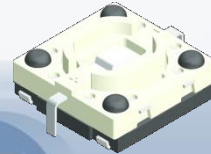
STAF

STML

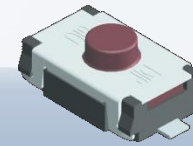
ST6L



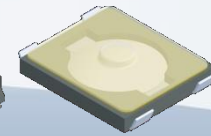
Tire Pressure Monitoring System Tact Switches



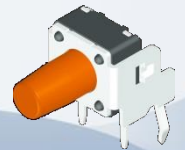
SML412W



STAEF



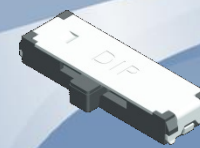
ST3AL



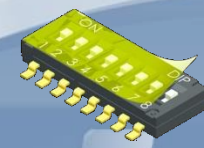
SDTSA



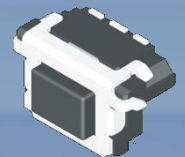
GPS Tact Switches



SSD12



SDHN



STF



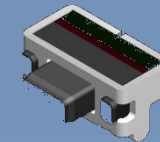
Dash CAM Recording Tact Switches



STAFG



SPTCLP2



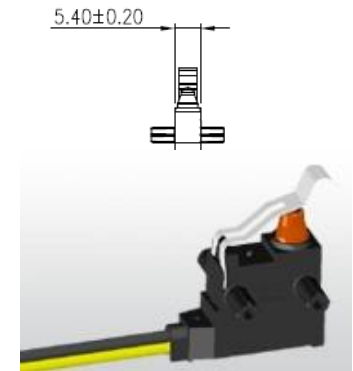
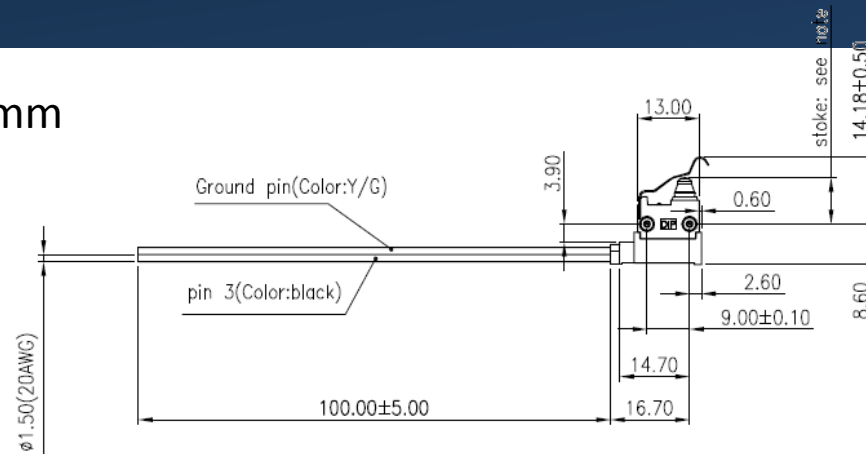
STCD



STAC

NEW Product: SKTE

13mm x 5.4mm x 22.78 mm



Electric feature	Life	200,000 cycles @ 40-60 times/minute
	Contact resistance	500mΩ Max.
	Insulation resistance	100MΩ Min.
	Dielectric strength	AC 250V/ 1 minute
Mechanical Feature	Operating force	Actuating Force → 1.6N
	Remarks	Working: -40°C~+85°C

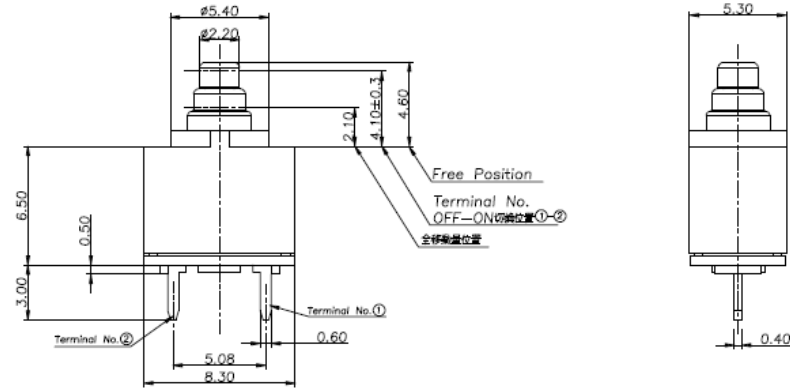
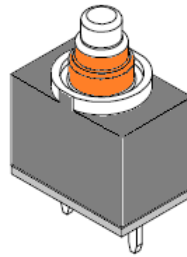
SKTE Applications

- PHEV/EV AC Charging Gun
- PHEV/EV DC Charging Gun
- Seat Belt/Restraint Detection
- Detection for Hood



NEW Product: SLTE

8.5mm x 5.3mm x 11.3 mm



Electrical feature	Life	300,000 cycles
	Contact resistance	500m Ω Max.
	Insulation resistance	100M Ω Min.
	Dielectric strength	AC 500V/ 1 minute
Mechanical feature	Operating force	1 \pm 0.5N
	Remarks	Working: T.B.D

SLTE Applications

- Battery Detector – Electric Motorcycles
- Button – Motorcycle Handle Bar
- Keyless Entry - Vehicles



A large, abstract blue background with a central circular light effect and geometric patterns of overlapping lines and shapes.

Questions?
Thank You

