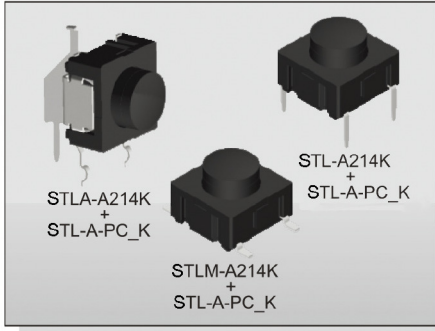


TACT SWITCH
STL()-A2 SERIES

10x10
High Reliability



2018



FEATURES

- ※ Sealed
- ※ Long life of 10million
- ※ Variety of actuator lengths

APPLICATION

- ※ Music instrument
- ※ Intercom system
- ※ Industrial

SPECIFICATION

Contact Rating	0.5~50mA, 24V DC
Contact Resistance	30mΩ max.
Insulation Resistance	10MΩ min. 100V DC
Dielectric Strength	250V AC/1 minute
Operating Force	300±75gf
Travel	1mm
Operating Life	10,000, 000 cycles
Operating Temp.	-40°C ~ +160°C
Storage Temp.	-40°C ~ +160°C

HOW TO ORDER

STL □ - A 2 1 4 K - Q - □ + STL - A - PC □ K

□=Through Hole
M=S.M.T.
A=Right Angle

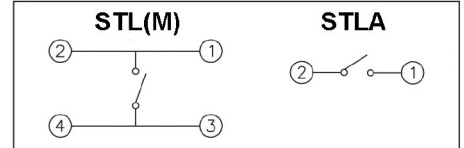
Package:
B=Tube
(For Through Hole Type)
T/R=Tape & Reel(For S.M.T. Type)

Halogen Free

Button Color:
Black

Operating Force:
300gf

CIRCUIT

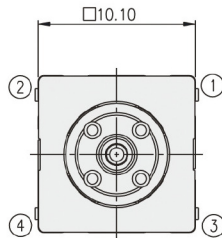


PACKAGE

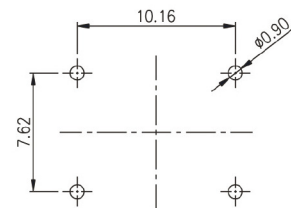
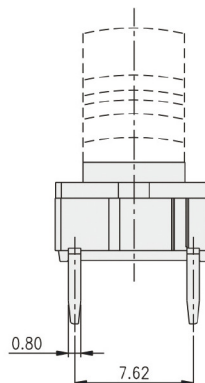
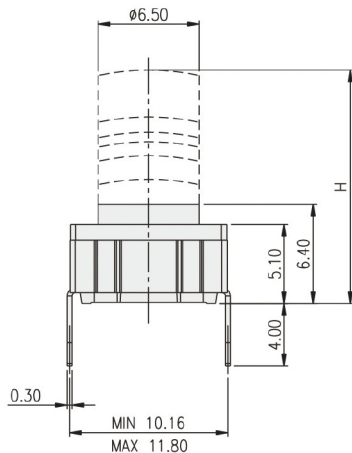
<Tube>
STL(A): 45 pcs
<Tape & Reel>
STLM: 650 pcs

TACT SWITCH

STL-A214K+STL-A-PC□K

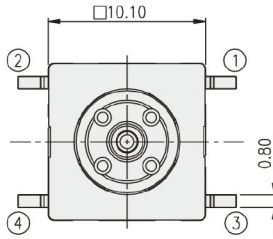


PART NO.	H
STL-A214K-Q-B+STL-A-PC1K	8.00
STL-A214K-Q-B+STL-A-PC2K	9.50
STL-A214K-Q-B+STL-A-PC3K	10.40
STL-A214K-Q-B+STL-A-PC4K	11.00
STL-A214K-Q-B+STL-A-PC5K	12.00
STL-A214K-Q-B+STL-A-PC6K	15.00

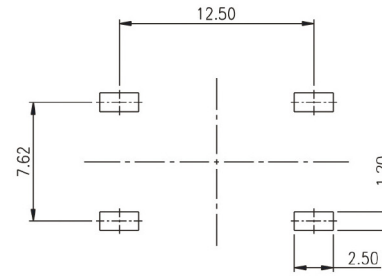
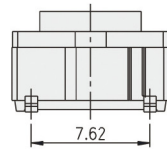
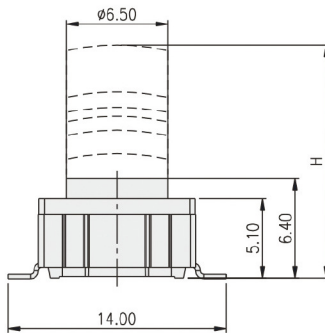


P.C.B. LAYOUT

STLM-A214K + STL-A-PC□K



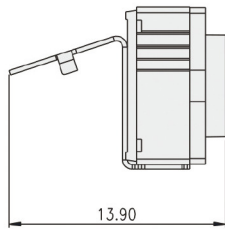
PART NO.	H
STLM-A214K-Q-B+STL-A-PC1K	8.00
STLM-A214K-Q-B+STL-A-PC2K	9.50
STLM-A214K-Q-B+STL-A-PC3K	10.40
STLM-A214K-Q-B+STL-A-PC4K	11.00
STLM-A214K-Q-B+STL-A-PC5K	12.00
STLM-A214K-Q-B+STL-A-PC6K	15.00



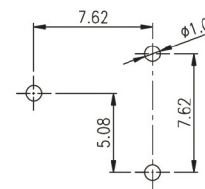
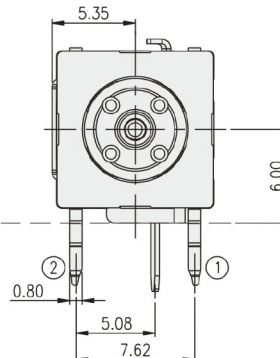
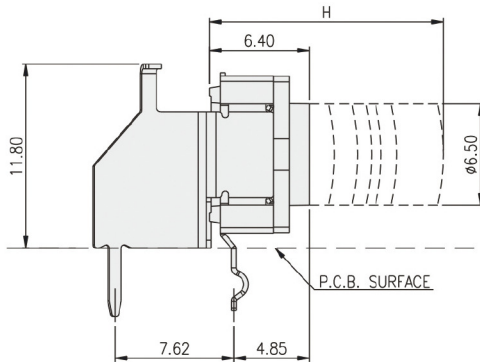
P.C.B. LAYOUT

TACT SWITCH

STLA-A214K + STL-A-PC□K



PART NO.	H
STLA-A214K-Q-B+STL-A-PC1K	8.00
STLA-A214K-Q-B+STL-A-PC2K	9.50
STLA-A214K-Q-B+STL-A-PC3K	10.40
STLA-A214K-Q-B+STL-A-PC4K	11.00
STLA-A214K-Q-B+STL-A-PC5K	12.00
STLA-A214K-Q-B+STL-A-PC6K	15.00



P.C.B. LAYOUT