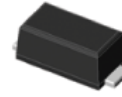


Features

- Glass passivated junction
- Compatible with SOD-123
- Excellent Clamping capability
- Low incremental surge resistance
- Moisture sensitivity: level 1, per J-STD-020
- AEC-Q101 qualified
- Low profile, Max height 1.08mm



eSGA

TYPICAL APPLICATIONS

For use of LAN protection, ESD protection, EFT protection in cellular phones, portable devices, business machines, power supplies and other consumer applications.

Maximum Ratings and Thermal Characteristics (TA=25• unless otherwise noted)			
Parameter	Symbol	Value	Unit
Peak Pulse Power Dissipation at TA=25°C by 10x1000µs (Note 1)	PPPM	200	W
Thermal Resistance Junction- to-Ambient	RTHJ-A	220	°C/W
Thermal Resistance Junction- to-Lead	RTHJ-L	100	°C/W
Operating and Storage Temperature Range	TJ,TSTG	-55 to 150	°C

Notes:

1. Non-repetitive current pulse, per Fig. 3 and derated above TA=25°C per Fig. 2.
2. Non-repetitive current pulse per Fig. 4 and derated above TA=25°C per Fig 2.

ELECTRICAL CHARACTERISTICS (TA = 25 °C unless otherwise noted)							
Part Number	Reverse	Breakdown Voltage		Test Current	Reverse	Max.	Peak
	VRWM	VBR @ IT		IT	IR @ VRWM	Vc @ IPP	IPP
		Min	Max				
	V	V	V	mA	µA	V	A
F2TVS5.0A	5	6.4	7.07	10	800	9.2	21.7
F2TVS6.0A	6	6.67	7.37	10	800	10.3	19.4
F2TVS6.5A	6.5	7.22	7.98	10	500	11.2	17.9
F2TVS7.0A	7	7.78	8.6	10	200	12	16.7
F2TVS7.5A	7.5	8.33	9.21	1	100	12.9	15.5
F2TVS8.0A	8	8.89	9.83	1	50	13.6	14.7
F2TVS8.5A	8.5	9.44	10.4	1	10	14.4	13.9
F2TVS9.0A	9	10	11.1	1	5	15.4	13
F2TVS10A	10	11.1	12.3	1	5	17	11.8
F2TVS11A	11	12.2	13.5	1	5	18.2	11
F2TVS12A	12	13.3	14.7	1	5	19.9	10.1
F2TVS13A	13	14.4	15.9	1	5	21.5	9.3
F2TVS14A	14	15.6	17.2	1	5	23.2	8.62
F2TVS15A	15	16.7	18.5	1	5	24.4	8.2
F2TVS16A	16	17.8	19.7	1	5	26	7.69
F2TVS17A	17	18.9	20.9	1	5	27.6	7.25
F2TVS18A	18	20	22.1	1	5	29.2	6.85
F2TVS19A	19	21.1	23.3	1	5	30.6	6.54



F2TVS5.0A thru F2TVS190A

200W Transient Voltage Suppressor

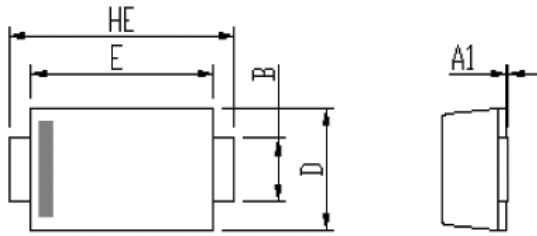
Stand Off Voltage 5.0 to 190V

ELECTRICAL CHARACTERISTICS (TA = 25 °C unless otherwise noted)							
Part Number	Reverse	Breakdown Voltage		Test Current	Reverse	Max.	Peak
	VRWM	VBR @ IT		IT	IR @ VRWM	Vc @ IPP	IPP
		Min	Max				
	V	V	V	mA	µA	V	A
F2TVS20A	20	22.2	24.5	1	5	32.4	6.17
F2TVS22A	22	24.4	26.9	1	5	35.5	5.63
F2TVS24A	24	26.7	29.5	1	5	38.9	5.14
F2TVS26A	26	28.9	31.9	1	5	42.1	4.75
F2TVS28A	28	31.1	34.4	1	5	45.4	4.41
F2TVS30A	30	33.3	36.8	1	5	48.4	4.13
F2TVS33A	33	36.7	40.6	1	5	53.3	3.75
F2TVS36A	36	40	44.2	1	5	58.1	3.44
F2TVS40A	40	44.4	49.1	1	5	64.5	3.1
F2TVS43A	43	47.8	52.8	1	5	69.4	2.88
F2TVS45A	45	50	55.3	1	5	72.7	2.75
F2TVS48A	48	53.3	58.9	1	5	77.4	2.58
F2TVS51A	51	56.7	62.7	1	5	82.4	2.43
F2TVS54A	54	60	66.3	1	5	87.1	2.3
F2TVS58A	58	64.4	71.2	1	5	93.6	2.14
F2TVS60A	60	66.7	73.7	1	5	96.8	2.07
F2TVS64A	64	71.1	78.6	1	5	103	1.94
F2TVS70A	70	77.8	86	1	5	113	1.77
F2TVS75A	75	83.3	92.1	1	5	121	1.65
F2TVS78A	78	86.7	95.8	1	5	126	1.59
F2TVS80A	80	88.8	97.6	1	5	129	1.55
F2TVS85A	85	94.4	104	1	5	137	1.46
F2TVS90A	90	100	111	1	5	146	1.37
F2TVS100A	100	111	123	1	5	162	1.23
F2TVS110A	110	122	135	1	5	177	1.13
F2TVS120A	120	133	147	1	5	193	1.04
F2TVS130A	130	144	159	1	5	209	0.96
F2TVS140A	140	155	171	1	5	224	0.89
F2TVS150A	150	167	185	1	5	243	0.82
F2TVS160A	160	178	197	1	5	259	0.77
F2TVS170A	170	189	209	1	5	275	0.73
F2TVS180A	180	201	222	1	5	292	0.69
F2TVS190A	190	211	232	1	5	324	0.62

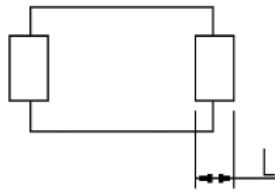
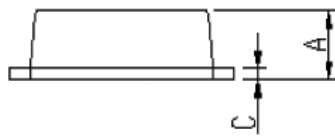
RATINGS AND CHARACTERISTICS CURVES

(TBD)

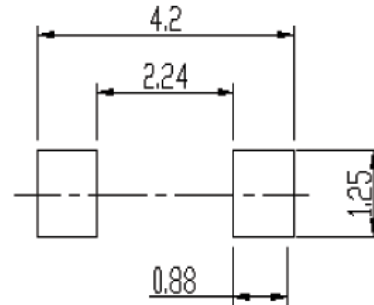
PACKAGE OUTLINE DIMENSIONS



DIM	Unit: mm		Unit: inch	
	MIN	MAX	MIN	MAX
A	0.9	1.08	0.035	0.043
A1	0	0.1	0.000	0.004
b	0.85	1.05	0.033	0.041
c	0.1	0.25	0.004	0.010
D	1.7	2	0.067	0.079
E	2.9	3.1	0.114	0.122
L	0.43	0.83	0.017	0.033
HE	3.5	3.9	0.138	0.154



Soldering footprint



PACKING INFORMATION

Packing quantities:

3000 pcs/Reel, 40 Reels/Box; 8mm Tape, 7" Reel

Tape & Reel Specification

