



URGENT

**DISCRETE
SEMICONDUCTORS**

TS-16949

AEC-Q101

DISCRETE SEMICONDUCTORS



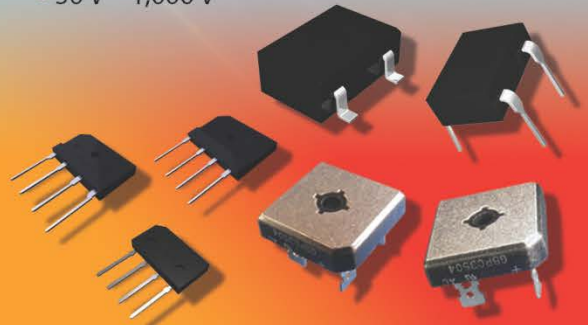
Fast/Superfast/ Ultrafast Recovery Rectifiers

- Diffused junction
- Fast switching for high efficiency (35nS-500nS)
- High current capability and low forward voltage drop
- Low reverse leakage current
- 1 A – 30 A
- 50 V – 10,000 V



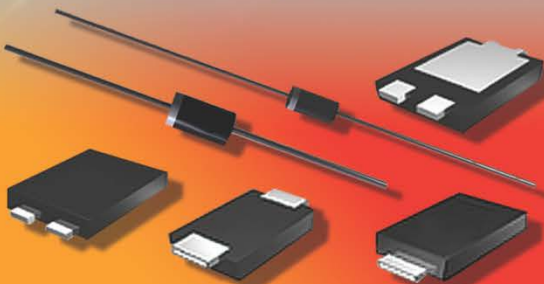
Bridge Rectifiers

- Average rectified current up to 50 A
- Glass and silicon passivation
- In-line, square, low-profile and SMD packages
- Low leakage and low forward voltage
- Schottkys available 1 A – 3 A
- 0.5 A – 50 A
- 50 V – 1,000 V



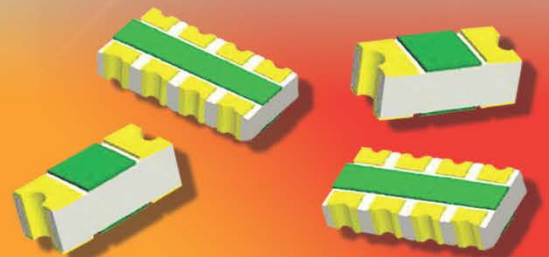
TVS Diodes and Arrays

- Unidirectional and bidirectional polarities
- Multi line data protection
- Fast response time with excellent clamping capability
- Peak power ratings from 60 W – 5,000 W
- Low incremental surge resistance



Polymer ESD Diodes

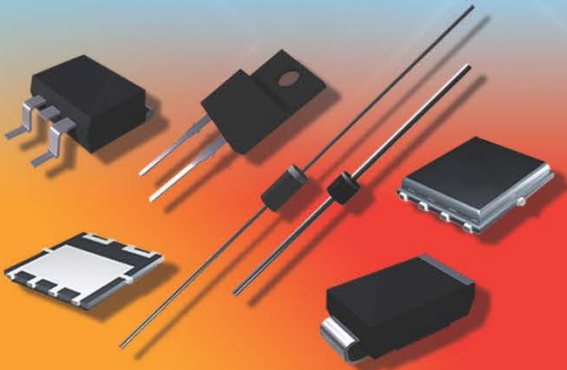
- Optimal protection for high frequency, low voltage applications
- Extremely low capacitance
- Very low leakage current
- Fast response time
- Bidirectional ESD protection





Schottky Diodes/ Rectifiers

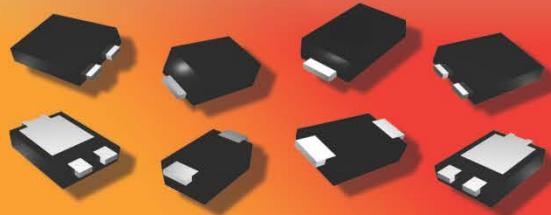
- High efficiency, low power loss
- 0.1 A – 30 A current capability
- Low forward voltage drop
- Fast switching
- 20 V – 200 V



Packaging Innovation

- Space conservation
(Low profile In-Line Bridges and SMD)
- Smaller packages (mm)
eSGA (3.7 L x 1.8 W x 1.9 H)
eSGB (4.8 L x 2.6 W x 1.0 H)
eSGC (6.4 L x 3.0 W x 1.05 H)
- Available in Schottky, TVS and all Recovery rectifiers.
- QFN: Ideal for inverter, lighting and power supply applications
- DFN: Ideal for small handheld applications

NEW



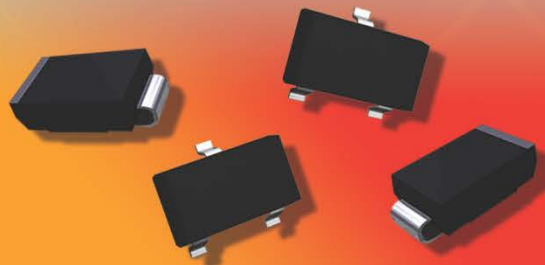
Zener Diodes, Small Signal Products

- Fast switching speed
- Surface mount and thru-hole
- High reliability
- Voltage regulation and small footprint



Switching Diodes

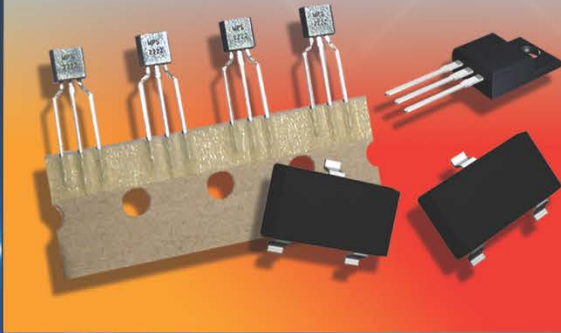
- Voltage ranges from 35 V – 250 V
- Fast switching speeds
- Low leakage current
- Small surface mount packages





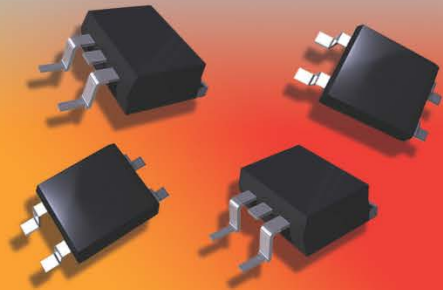
Transistors

- Switching and general purpose
- NPN and PNP, 30 V – 500 V range
- Fast switching, Low saturation voltages
- High reliability



MOSFETs

- N, P and dual channels
- Low RDS (on)
- 20 V – 100 V (Low Voltage)
- 600 V – 800 V (High Voltage)



Surge Components, Inc.

Corporate Headquarters

95 East Jefryn Blvd.
Deer Park, NY 11729
Tel > 631.595.1818
Fax > 631.595.1283

Asia Headquarters

Room 401, 4/F Block B
Hoi Luen Industrial Centre
55 Hoi Yuen Road
Kwun Tong Kowloon
Hong Kong
Tel > 011.852.2172.7607



www.surgecomponents.com