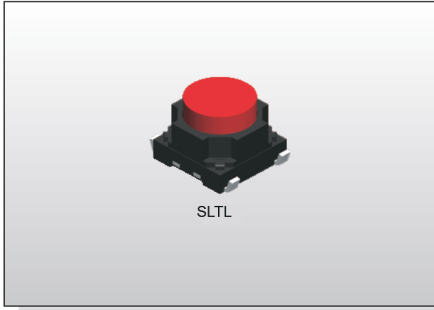


TACT SWITCH SLTL-6 SERIES

Long Travel SMT Type Tactile Switch



SLTL

FEATURES

- ※Soft actuation feeling
- ※Long travel of 1.3mm
- ※Wide stem for easy operation

APPLICATION

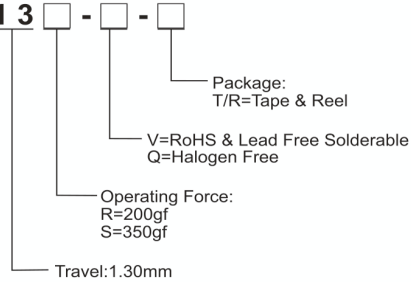
- ※Automotive
- ※Instrumentation
- ※Audio

SPECIFICATION

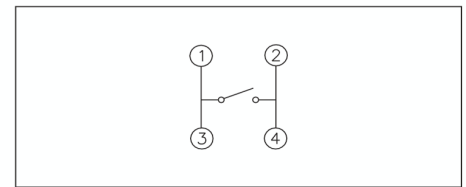
Contact Rating	50mA, 12V DC
Contact Resistance	100mΩ max. 500V DC
Insulation Resistance	100MΩ min. 500V DC
Dielectric Strength	300V AC/1 minute
Operating Force	200±50gf/350±100gf
Travel	1.3mm
Operating Life	30,000 cycles (350gf) 100,000 cycles (200gf)
Operating Temp.	-40°C ~ +85°C
Storage Temp.	-40°C ~ +85°C

HOW TO ORDER

SLTL-613



CIRCUIT

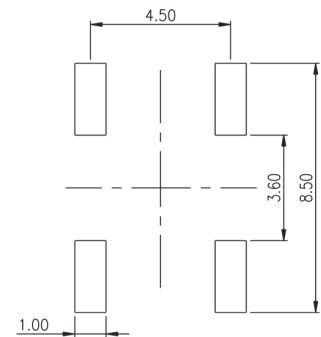
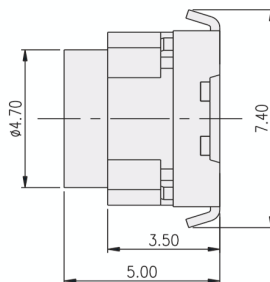
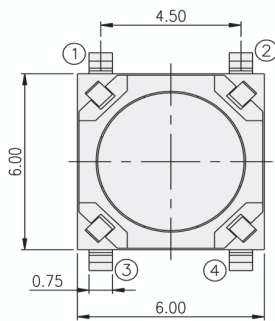


PACKAGE

<Tape & Reel>
900 pcs

TACT SWITCH

SLTL-6



P.C.B. LAYOUT