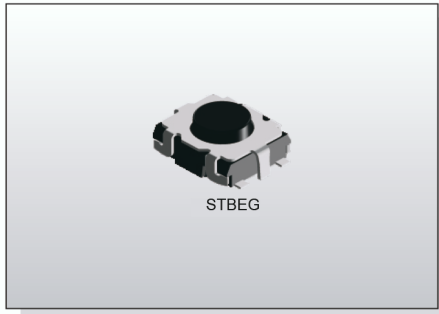


TACT SWITCH

STBE Series

2.7x3.0
Vertical Push Type



STBEG

FEATURES

- ※Electrical life: 200,000 cycles
- ※Sharp click feeling
- ※2.7x3.0mm miniature tact switch

APPLICATION

- ※Automotive
- ※Video game device

SPECIFICATION

Contact Rating	50mA, 12V DC
Contact Resistance	100mΩ max.
Insulation Resistance	100MΩ min. 500V DC
Dielectric Strength	250V AC/1 minute
Operating Force	160±50gf/200±50gf/400±80gf
Travel	0.12mm
Operating Life	200,000 cycles
Operating Temp.	-40°C ~ +85°C
Storage Temp.	-40°C ~ +90°C

HOW TO ORDER

STBE - [] - [] - Q - []

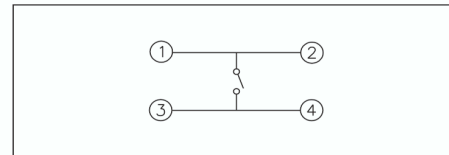
G=With Ground Pin
□=Without Ground Pin

Package:
T/R=Tape & Reel

Halogen Free

Operating Force:
N=Brown, 160gf
W=White, 200gf
□=Black, 400gf

CIRCUIT

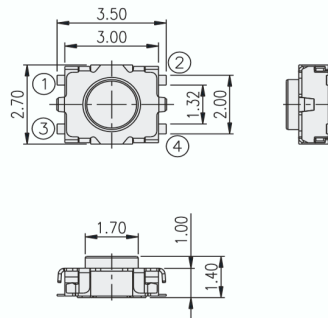


PACKAGE

<Tape & Reel>
8000 pcs

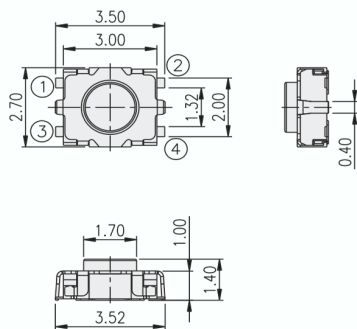
TACT SWITCH

STBE



P.C.B. LAYOUT

STBEG



P.C.B. LAYOUT