

Features

- 105°C, 15,000 hours assured
- Ultra low ESR, solid capacitors of SMD type
- RoHS Compliance



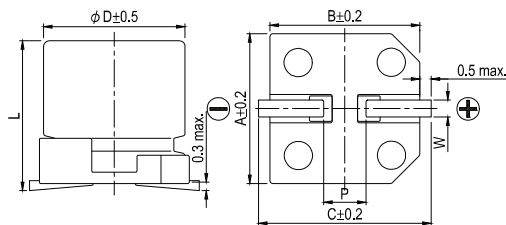
Marking color: Blue

Specifications

Items	Performance										
Category Temperature Range	-55°C ~ +105°C										
Capacitance Tolerance	±20% (at 120 Hz, 20°C)										
Leakage Current (at 20°C)*	Rated voltage applied, after 2 minutes at 20°C. See Standard Ratings										
Tanδ (at 120 Hz, 20°C)	See Standard Ratings										
ESR (at 100k ~ 300k Hz, 20°C)	See Standard Ratings										
Endurance	<table border="1"> <tr> <td>Test Time</td> <td>15,000 Hrs For 5 ~ 6.3 φ × 4.4L: 3,000 Hrs</td> </tr> <tr> <td>Capacitance Change</td> <td>Within ±20% of initial value</td> </tr> <tr> <td>Tanδ</td> <td>Less than 150% of specified value</td> </tr> <tr> <td>ESR</td> <td>Less than 150% of specified value</td> </tr> <tr> <td>Leakage Current</td> <td>Within specified value</td> </tr> </table>	Test Time	15,000 Hrs For 5 ~ 6.3 φ × 4.4L: 3,000 Hrs	Capacitance Change	Within ±20% of initial value	Tanδ	Less than 150% of specified value	ESR	Less than 150% of specified value	Leakage Current	Within specified value
	Test Time	15,000 Hrs For 5 ~ 6.3 φ × 4.4L: 3,000 Hrs									
	Capacitance Change	Within ±20% of initial value									
	Tanδ	Less than 150% of specified value									
	ESR	Less than 150% of specified value									
Leakage Current	Within specified value										
* The above specifications shall be satisfied when the capacitors are restored to 20°C after the rated voltage applied for 15,000 hours at 105°C.											
Moisture Resistance	<table border="1"> <tr> <td>Test Time</td> <td>1,000 Hrs</td> </tr> <tr> <td>Capacitance Change</td> <td>Within ±20% of initial value</td> </tr> <tr> <td>Tanδ</td> <td>Less than 150% of specified value</td> </tr> <tr> <td>ESR</td> <td>Less than 150% of specified value</td> </tr> <tr> <td>Leakage Current</td> <td>Within specified value</td> </tr> </table>	Test Time	1,000 Hrs	Capacitance Change	Within ±20% of initial value	Tanδ	Less than 150% of specified value	ESR	Less than 150% of specified value	Leakage Current	Within specified value
	Test Time	1,000 Hrs									
	Capacitance Change	Within ±20% of initial value									
	Tanδ	Less than 150% of specified value									
	ESR	Less than 150% of specified value									
Leakage Current	Within specified value										
* The above specifications shall be satisfied when the capacitors are restored to 20°C after subjecting them at 60°C, 90 ~ 95% RH for 1,000 hours. Leakage current should be tested after voltage treatment*.											
Resistance to Soldering Heat * (Please refer to page 15 for reflow soldering conditions)	<table border="1"> <tr> <td>Capacitance Change</td> <td>Within ±10% of initial value</td> </tr> <tr> <td>Tanδ</td> <td>Within specified value</td> </tr> <tr> <td>ESR</td> <td>Within specified value</td> </tr> <tr> <td>Leakage Current</td> <td>Within specified value</td> </tr> </table>	Capacitance Change	Within ±10% of initial value	Tanδ	Within specified value	ESR	Within specified value	Leakage Current	Within specified value		
	Capacitance Change	Within ±10% of initial value									
	Tanδ	Within specified value									
	ESR	Within specified value									
Leakage Current	Within specified value										
* For any doubt about measured values, measure the leakage current again after the following voltage treatment.											
Ripple Current and Frequency Multipliers	<table border="1"> <tr> <td>Frequency (Hz)</td> <td>120 ≤ f < 1k</td> <td>1k ≤ f < 10k</td> <td>10k ≤ f < 100k</td> <td>100k ≤ f < 500k</td> </tr> <tr> <td>Multiplier</td> <td>0.05</td> <td>0.3</td> <td>0.7</td> <td>1.0</td> </tr> </table>	Frequency (Hz)	120 ≤ f < 1k	1k ≤ f < 10k	10k ≤ f < 100k	100k ≤ f < 500k	Multiplier	0.05	0.3	0.7	1.0
	Frequency (Hz)	120 ≤ f < 1k	1k ≤ f < 10k	10k ≤ f < 100k	100k ≤ f < 500k						
Multiplier	0.05	0.3	0.7	1.0							

* For any doubt about measured values, measure the leakage current again after the following voltage treatment.
Voltage treatment: DC rated voltage is applied to the capacitors for 2 hours at 105°C.

Diagram of Dimensions



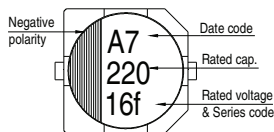
Lead Spacing and Diameter

Unit: mm

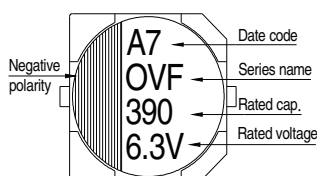
φD	L	A	B	C	W	P ± 0.2
5	4.4 ± 0.2	5.3	5.3	5.9	0.5 ~ 0.8	1.5
5	5.8 ± 0.3	5.3	5.3	5.9	0.5 ~ 0.8	1.5
6.3	4.4 ± 0.2	6.6	6.6	7.2	0.5 ~ 0.8	2.0
6.3	5.8 ± 0.3	6.6	6.6	7.2	0.5 ~ 0.8	2.0
6.3	7.7 ± 0.3	6.6	6.6	7.2	0.5 ~ 0.8	2.0
8	6.7 ± 0.3	8.3	8.3	9.0	0.7 ~ 1.1	3.1
8	7.7 ± 0.3	8.3	8.3	9.0	0.7 ~ 1.1	3.1

Marking

φD = 5 ~ 6.3



φD = 8



Dimension: $\phi D \times L$ (mm)
Ripple Current: mA/rms at 100k Hz, 105°C

Standard Ratings

Rated Volt. (V)	Surge Voltage (V)	Capacitance (μ F)	Size $\phi D \times L$ (mm)	Tan δ (120 Hz, 20°C)	L C (μ A)	E S R (m Ω /at 100k ~ 300k Hz, 20°C max.)	Rated R. C. (mA/rms at 100k Hz, 105°C)
2.0 (0D)	2.3	680	6.3 x 5.8	0.12	700	12	3,500
2.5V (0E)	2.9	220	5 x 4.4	0.12	700	25	2,100
			5 x 5.8			10	3,900
		330	6.3 x 4.4			12	3,500
			5 x 5.8			10	3,900
		390	6.3 x 5.8		292	10	3,900
			5 x 5.8		352	9	4,200
		470	6.3 x 7.7		700	10	3,900
			6.3 x 5.8		420	9	4,200
		560	6.3 x 7.7		420	10	4,500
			8 x 6.7		510	10	
680	8 x 6.7	750	9				
	1,000	8 x 7.7					
4V (0G)	4.6	330	6.3 x 5.8	0.12	396	10	3,900
			6.3 x 7.7			468	9
		470	8 x 6.7		564	10	4,500
			8 x 6.7		672	10	
		680	8 x 7.7		816	9	
6.3V (0J)	7.2	150	5 x 4.4	0.12	700	25	2,100
			5 x 5.8			12	3,500
		220	5 x 5.8		12	3,500	
			6.3 x 5.8		416	10	3,900
		270	6.3 x 7.7		510	9	4,200
			6.3 x 5.8		700	10	3,900
		330	6.3 x 7.7		623	9	4,200
			8 x 6.7		624	10	4,500
		390	8 x 6.7		737	10	4,500
			8 x 7.7		888	9	4,500
560	8 x 7.7	1,050	9	4,500			
10V (1A)	12.0	120	5 x 5.8	0.12	240	22	2,600

Part Numbering System

OVF Series 560 μ F $\pm 20\%$ 2.5V Carrier Tape 6.3 ϕ x 7.7L

OVF **561** **M** **0E** **TR** - **0608** **XX**
Series Name Capacitance Capacitance Tolerance Rated Voltage Package Type Terminal Type Case Size

XX
S = Standard
KS = AEC-Q200 Qualified, Safety Critical Application
LS = AEC-Q200 Qualified, Non-Safety Critical Application