

TACT SWITCH  
**SDTSYHL-6 SERIES**

6x6 Through Hole Type  
(Pitch 4.0mm)



2018



**FEATURES**

- ※Low profile with 2.5-3.5mm height
- ※Snap-in type
- ※Sharp click feeling

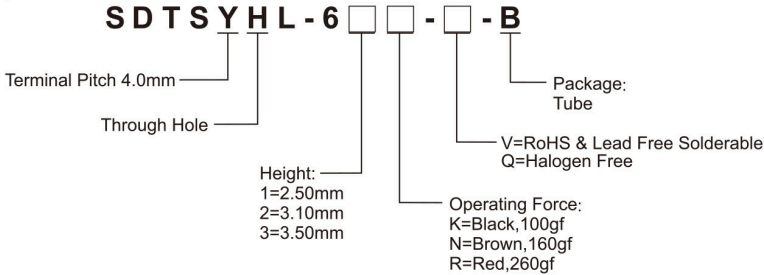
**APPLICATION**

- ※Audio, OA equipment
- ※Instrumentation
- ※Industrial

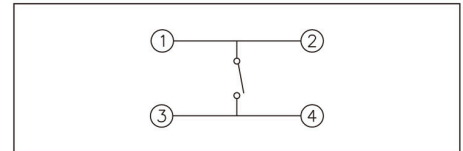
**SPECIFICATION**

Contact Rating	50mA, 12V DC
Contact Resistance	100mΩ max.
Insulation Resistance	100MΩ min. 500V DC
Dielectric Strength	250V AC/1 minute
Operating Force	100±50gf, Black(K) 160±50gf, Brown(N) 260±50gf, Red(R)
Travel	0.25mm
Operating Life	100,000 cycles for 260gf 1,000,000 cycles for 160, 100gf
Operating Temp.	-25°C ~ +70°C
Storage Temp.	-40°C ~ +70°C

**HOW TO ORDER**



**CIRCUIT**

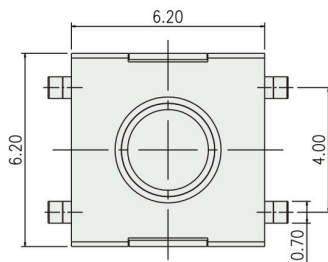


**PACKAGE**

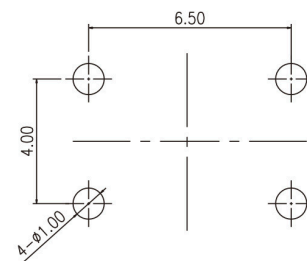
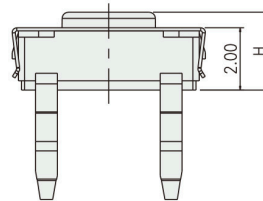
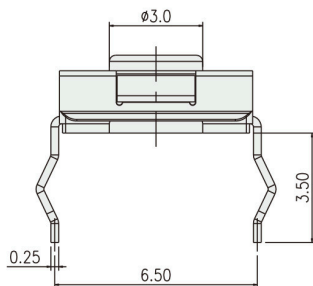
<Tube>  
75 pcs

TACT SWITCH

**SDTSYHL-6**



PART NO.	H
SDTSYHL-61	2.50
SDTSYHL-62	3.10
SDTSYHL-63	3.50



P.C.B. LAYOUT