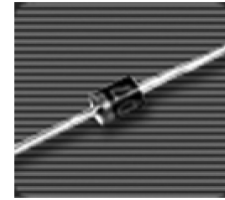


Features

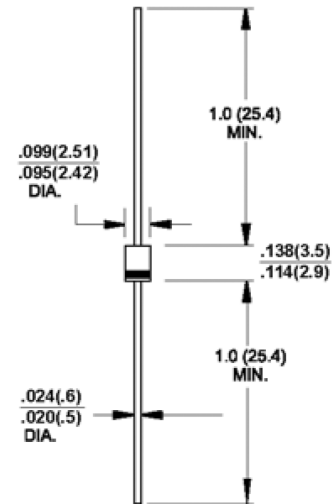
- ◆ Low forward voltage drop
- ◆ High current capability
- ◆ High reliability
- ◆ High surge current capability
- ◆ T_J is 150°C (Max.) and T_{STG} is 175°C (Max.) with PI glue



R-1

Mechanical Data

- ◆ Case: Molded plastic R-1
- ◆ Epoxy: UL 94V-O rate flame retardant
- ◆ Lead: Axial leads, solderable per MIL-STD-202, Method 208 guaranteed
- ◆ Polarity: Color band denotes cathode end
- ◆ High temperature soldering guaranteed:
250°C/10 seconds .375" (9.5mm) lead lengths at 5 lbs., (2.3kg) tension
- ◆ Weight: 0.007 ounce, 0.20 gram



Dimensions in inches and (millimeters)

Maximum Ratings and Electrical Characteristics

Ratings at 25°C ambient temperature unless otherwise specified.

Single phase, half wave, 60Hz, resistive or inductive load.

For capacitive load, derate current by 20%

Parameter	Symbols	1S1	1S2	1S3	1S4	1S5	1S6	1S7	1S8	1S9	Units
Maximum repetitive peak reverse voltage	V_{RRM}	50	100	150	200	300	400	600	800	1000	Volts
Maximum RMS voltage	V_{RMS}	35	70	105	140	210	280	420	560	700	Volts
Maximum DC blocking voltage	V_{DC}	50	100	150	200	300	400	600	800	1000	Volts
Maximum average forward rectified current .375" (9.5mm) lead length @ $T_A=55^\circ\text{C}$	$I_{(AV)}$	1.0									Amp
Peak forward surge current, 8.3ms single half sine-wave superimposed on rated load (JEDEC Method)	I_{FSM}	30.0									Amps
Maximum instantaneous forward voltage @ 1.0A	V_F	0.95			1.3		1.7			Volts	
Maximum DC reverse current @ $T_A=25^\circ\text{C}$ at rated DC blocking voltage @ $T_A=100^\circ\text{C}$	I_R					5.0		100			μA μA
Maximum reverse recovery time (Note 1)	t_{rr}						35			nS	
Typical junction capacitance (Note 2)	C_j	40				25				pF	
Operating junction temperature range	T_J	-55 to +125									°C
Storage temperature range	T_{STG}	-55 to +150									°C

- Notes:**
1. Reverse Recovery Test Conditions: $I_F=0.5\text{A}$, $I_R=1.0\text{A}$, $I_{RR}=0.25\text{A}$
 2. Measured at 1 MHz and Applied Reverse Voltage of 4.0 V D.C.

RATINGS AND CHARACTERISTIC CURVES

FIG.1- REVERSE RECOVERY TIME CHARACTERISTIC AND TEST CIRCUIT DIAGRAM

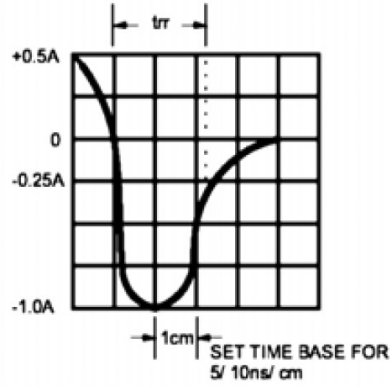
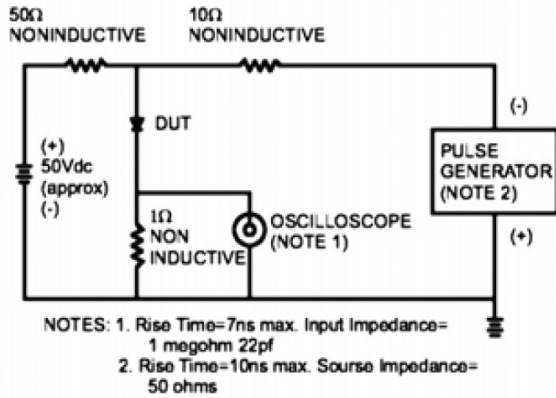


FIG.2- MAXIMUM AVERAGE FORWARD CURRENT DERATING

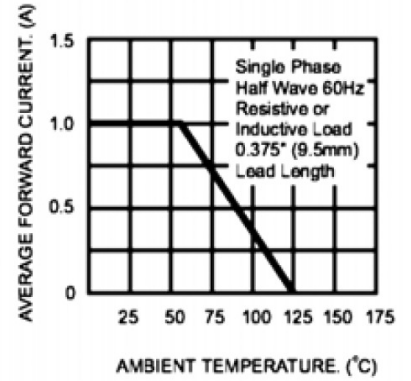


FIG.3- TYPICAL REVERSE CHARACTERISTICS

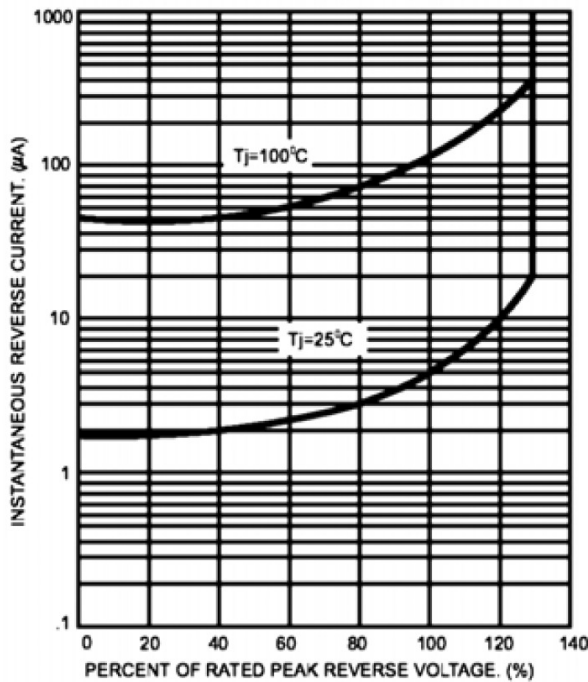


FIG.4- TYPICAL FORWARD CHARACTERISTICS

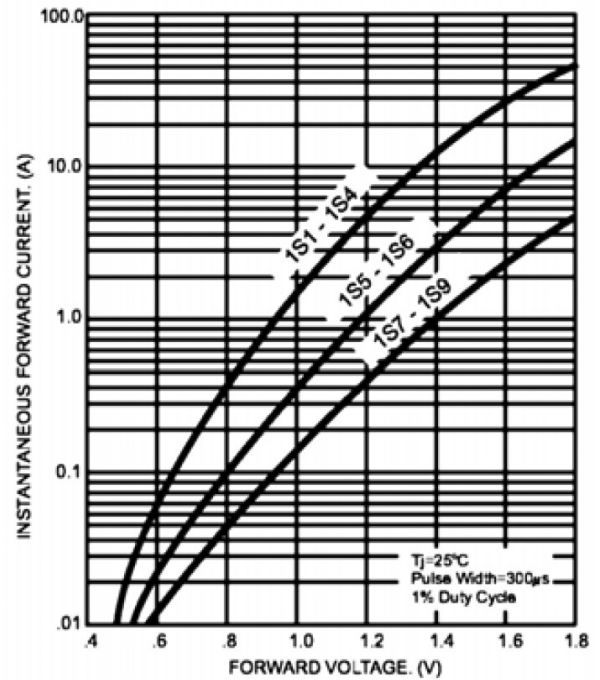


FIG.5- MAXIMUM NON-REPETITIVE FORWARD SURGE CURRENT

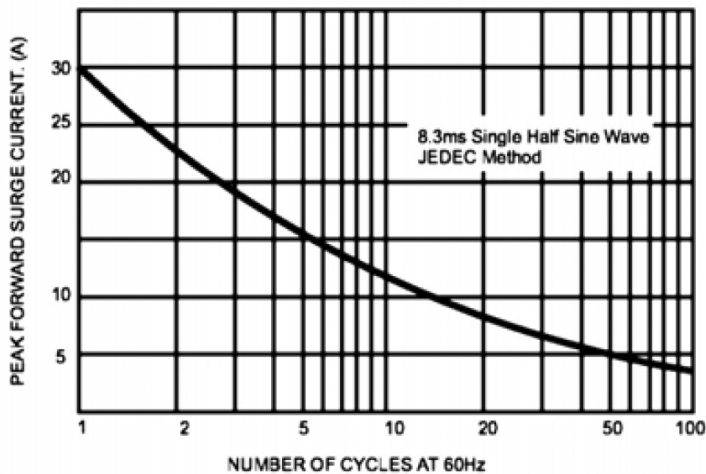


FIG.6- TYPICAL JUNCTION CAPACITANCE

